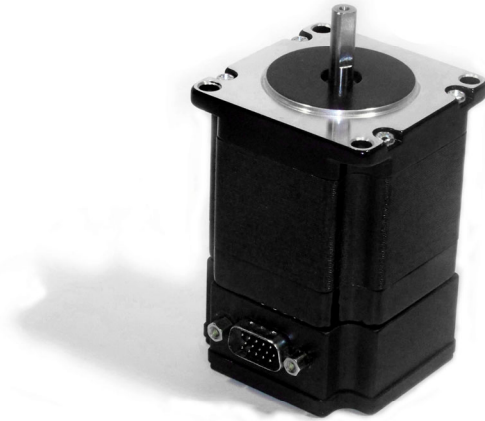


145 oz-in (1Nm) NEMA 23 Frame Servo Motor



QuickSilver Controls, Inc. expands its current line of servo motors with the QCI-A23K-3. This NEMA 23 frame motor generates 145 oz-in (1.0Nm) continuous torque, 165 oz-in (1.1Nm) peak torque, and 58W peak mechanical power. The 23K-3 comes standard with an 8000 count/rev encoder and is available in both IP50 and IP65 (wash down) packages. When combined with QuickSilver's line of easy to use servo controller/drivers, this motor creates a high torque servo control system for speeds up to 2000 RPM. With QCI's ability to handle inertial miss-matches of 100:1, this motor is ideal for driving large flywheel loads without additional gearing. The 23K-3, like QCI's other NEMA 17 and 23 frame servos, requires only a single cable for both encoder and motor signals.

The 23K-3 is an economical solution for motion control applications including semiconductor, packaging, medical and food processing.

See the QuickSilver website for a detailed datasheet (QCI-DS008).